



# Greater Gardner Artists Association

[www.gardner-ggaaart.org](http://www.gardner-ggaaart.org)

November 1, 2011

### Officers

Priscilla Mavrikis Walker—  
President

Deb Luoma—Vice  
President

Ann Howe—Secretary

Corinne Melanson—  
Treasurer

Mary Dunn—Public  
Relations

### Board of Directors

Maryalice Hurley

Sharon Koski

Sally Sargent

Pat Gendron

### *Pastel /November Demo*

Our November meeting will feature a pastel demo by Jill Pottle. She is a talented painter who uses different mediums as an art teacher and workshop instructor. She is currently the Artist in Residence at Fruitland's Museum in Harvard, MA. See you on Thursday, November 3rd at 7 pm in the Boland Room.



### *Oil Landscape /October Demo*

Our October meeting was an entertaining demonstration by Mike Lavin. As a seasoned plein air painter he captures the light in an impressionistic style. He gave us tips and techniques about loosening up in our paintings by following the basic rules which lead to a no fail result.



Mike in his plein air gear.



**REMINDER**  
All finished  
canvases for  
the "Festival of  
Trees" should  
be returned at  
our November  
6th meeting.



Mike & Deb Luoma, the lucky winner of a Bass Rocks oil painting donated by Mike for the Member's Raffle.

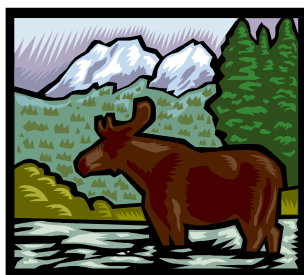


"Artist of the Month" for October with a theme of **AUTUMN**: Karol Berzins

**Dues must be paid by  
November 3rd to be  
eligible for a member  
status for our Spring Art  
Exhibit**

**"Artist of the Month"**  
Our theme for  
November is:  
**HATS**





### ***“Flora, Fauna, & Field Reflections “***

***Petersham Art Exhibit November 4—6, 2011***

**Petersham Town Hall 3 South Main St. Petersham, MA**

Opening Reception: Friday, November 4th 7—9 pm with classical guitarist and refreshments. The show continues on Saturday 10 am—4pm and Sunday 12pm—4pm.

### ***GALA Fall Art Show with Live Music***

**American Legion Hall 22 Elm St. Gardner, MA**

Opening Reception: Friday, November 4th Folk & Jazz Coffeehouse Saturday 1—9 pm Sunday 1—4pm Popular Choice & Raffle announced on Sunday at 3:15pm



### ***Jaffrey Civic Center Annual Autumn Area Art Exhibit November 18—December 17, 2011***

**Jaffrey Civic Center 40 Main St. Jaffrey, NH**

Drop-off: November 8—12 Visit website for hours

Opening Reception: Friday, November 18th 5—7pm

For an application and more info please visit:

[www.jaffreyciviccenter.com](http://www.jaffreyciviccenter.com)

### **Open Studios**



Celebrate the craftspeople, artists, and artisans of the state of NH. Special events and open studios happening all weekend. Visit: [www.NHopendoors.com](http://www.NHopendoors.com) for more info.

### **AWARDS**

Congratulations to **Paula Murphy** who recently won the West Charlton Frame Company Award at the **“It’s Pastel” 3rd Annual National Juried Show** at the Discover Portsmouth Center in Portsmouth, N.H. Paula won for her painting, “Country Comfort”.

